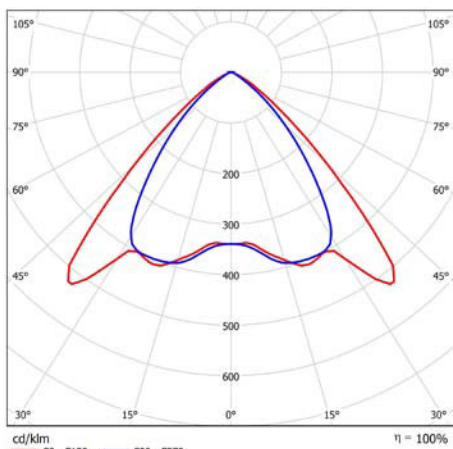




Link by Lighting



LED Panel Lights



Reflector metallised, lens clear

LED Indoor Lighting Panel light with 1 module

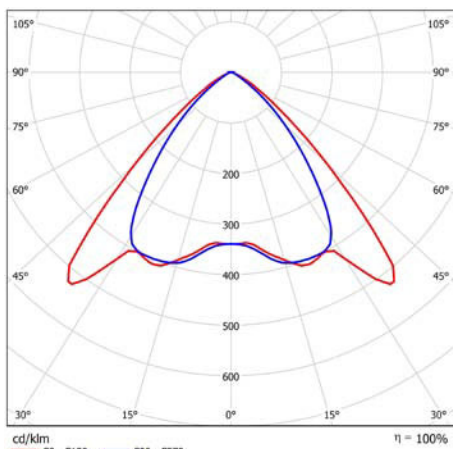
- Patented light control: Particularly homogeneous and wide illumination through the combination of a special optic lens and reflector technology. The metallised reflector is suitable for computer workstations.
- Sustainable concept with technology guarantee.
- Standard dimensions for easy integration into existing infrastructure.
Tool-free installation.
- Linect® compatible
- Suitable for: Offices, schools, restaurants, conference rooms and hallways

| ELECTRONICS | |
|-----------------------------|---|
| Luminaire type | Panel light with 1 LED module |
| Driver | Integrated |
| Mains connection | 220–240 V / ~50–60 Hz |
| Protection class | SK I |
| Power consumption* | 19 W |
| Power factor | ≥ 0.95 c |
| Dimming (optional) | 1–10 V / DALI |
| Operating temperature | 0°C to +35°C |
| LIGHT TECHNOLOGIES | |
| System luminous flux | 2,150 lm |
| Luminous flux over lifetime | 70% after 50,000 hours |
| Color temperature | 4,000 K |
| Color rendering index (CRI) | ≥ 80 |
| Optics | Light control through a combination of lens and reflector |

| ADDITIONAL DATA | | |
|--|--|----------------------------|
| Materials | Frame made from sheet steel, white-painted similar to RAL 9003 shiny, reflector made from high-performance plastic, reflector housing welded to plastic optic lens | |
| Reflector | metallized / white | |
| Lens | clear / matted | |
| IP Certification (Luminaire) | IP 20 | |
| Certification | CE | |
| Efficiency class | A+ | |
| GRID CEILINGS | | |
| Luminaire dimensions (L x W x H): | Weight: | Ceiling dimensions: |
| 595 x 294 x 101 mm | 3.0 kg | 600 x 300 mm |
| 622 x 310 x 101 mm | 3.3 kg | 625 x 312.5 mm |

* All performance parameters are based on an ambient temperature of 25°C

Issue 02 / 2014



Reflector metallised, lens clear

LED Indoor Lighting Panel light with 2 modules

- Patented light control: Particularly homogeneous and wide illumination through the combination of a special optic lens and reflector technology. The metallised reflector is suitable for computer workstations.
- Sustainable concept with technology guarantee.
- Standard dimensions for easy integration into existing infrastructure.
Tool-free installation.
- Linect® compatible
- Suitable for: Offices, schools, restaurants, conference rooms and hallways

| ELECTRONICS | |
|-----------------------------|---|
| Luminaire type | Panel light with 2 LED modules |
| Driver | Integrated |
| Mains connection | 220–240 V / ~50–60 Hz |
| Protection class | SK I |
| Power consumption* | 38 W |
| Power factor | ≥ 0.95 c |
| Dimming (optional) | 1–10 V / DALI |
| Operating temperature | 0°C to +35°C |
| LIGHT TECHNOLOGIES | |
| System luminous flux | 4,300 lm |
| Luminous flux over lifetime | 70% after 50,000 hours |
| Color temperature | 4,000 K |
| Color rendering index (CRI) | ≥ 80 |
| Optics | Light control through a combination of lens and reflector |

| ADDITIONAL DATA | | |
|--|--|----------------------------|
| Materials | Frame made from sheet steel, white-painted similar to RAL 9003 shiny, reflector made from high-performance plastic, reflector housing welded to plastic optic lens | |
| Reflector | metallized / white | |
| Lens | clear / matted | |
| IP Certification (Luminaire) | IP 20 | |
| Certification | CE | |
| Efficiency class | A+ | |
| GRID CEILINGS | | |
| Luminaire dimensions (L x W x H): | Weight: | Ceiling dimensions: |
| 1,195 x 294 x 101 mm | 6.1 kg | 1,200 x 300 mm |
| 1,245 x 310 x 101 mm | 6.4 kg | 1,250 x 312.5 mm |

* All performance parameters are based on an ambient temperature of 25°C

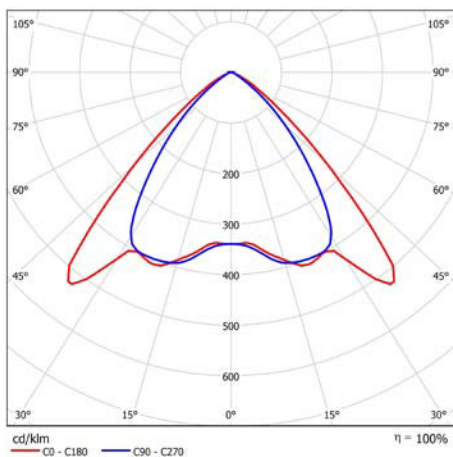
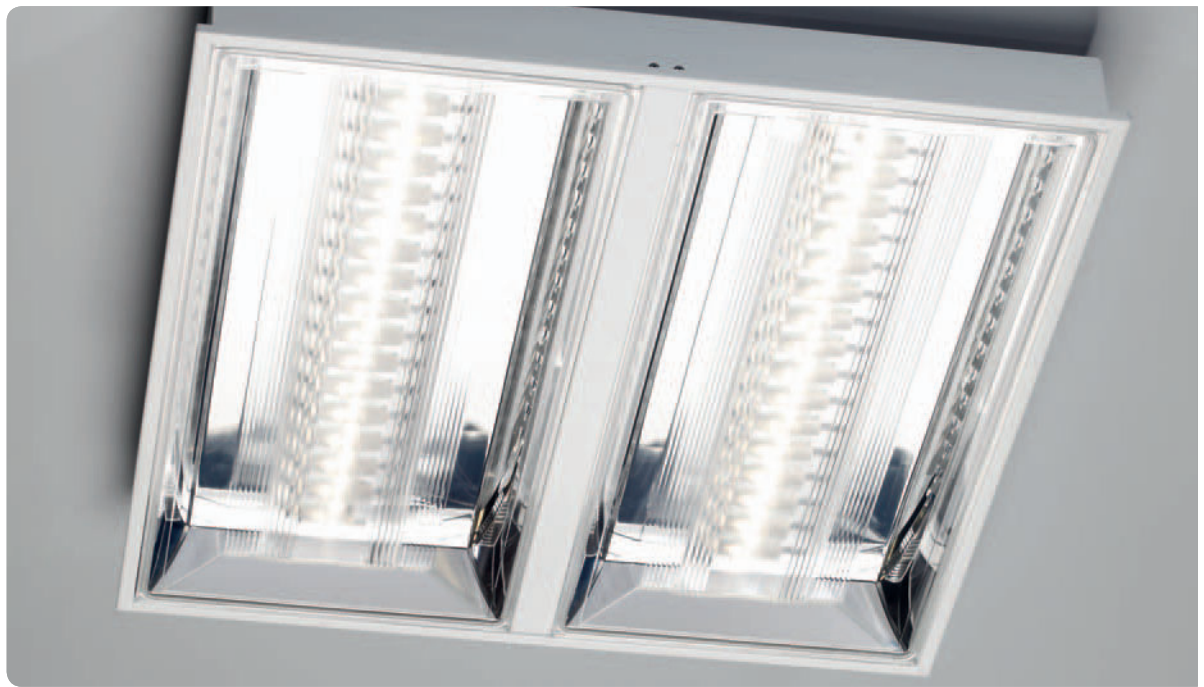
Issue 02 / 2014



Link by Lighting
LED Lighting Solutions

Stafford Park 5, Telford, Shropshire TF3 3AS T: 01952 217 924 F: 01952 293 927 E: sales@linkbylighting.co.uk www.linkbylighting.co.uk

**For more information contact Link By Lighting
sole distributor of Hella Products in the UK and Ireland**



Reflector metallised, lens clear

LED Indoor Lighting Panel light with 2 modules

- Patented light control: Particularly homogeneous and wide illumination through the combination of a special optic lens and reflector technology. The metallised reflector is suitable for computer workstations.
- Sustainable concept with technology guarantee.
- Standard dimensions for easy integration into existing infrastructure.
Tool-free installation.
- Linect® compatible
- Suitable for: Offices, schools, restaurants, conference rooms and hallways

| ELECTRONICS | |
|-----------------------------|---|
| Luminaire type | Panel light with 2 LED modules |
| Driver | Integrated |
| Mains connection | 220–240 V / ~50–60 Hz |
| Protection class | SK I |
| Power consumption* | 38 W |
| Power factor | ≥ 0.95 c |
| Dimming (optional) | 1–10 V / DALI |
| Operating temperature | 0°C to +35°C |
| LIGHT TECHNOLOGIES | |
| System luminous flux | 4,300 lm |
| Luminous flux over lifetime | 70% after 50,000 hours |
| Color temperature | 4,000 K |
| Color rendering index (CRI) | ≥ 80 |
| Optics | Light control through a combination of lens and reflector |

| ADDITIONAL DATA | | |
|--|--|----------------------------|
| Materials | Frame made from sheet steel, white-painted similar to RAL 9003 shiny, reflector made from high-performance plastic, reflector housing welded to plastic optic lens | |
| Reflector | metallized / white | |
| Lens | clear / matted | |
| IP Certification (Luminaire) | IP 20 | |
| Certification | CE | |
| Efficiency class | A+ | |
| GRID CEILINGS | | |
| Luminaire dimensions (L x W x H): | Weight: | Ceiling dimensions: |
| 595 x 595 x 83 mm | 6.1 kg | 600 x 600 mm |
| 622 x 622 x 83 mm | 6.4 kg | 625 x 625 mm |

* All performance parameters are based on an ambient temperature of 25°C

Issue 02 / 2014